

Open Data in the Tampere Region

Seppo Haataja, Director, Open Tampere

Jarkko Oksala, CIO, City of Tampere



THE CITY OF TAMPERE



6 Aika

All
Bright!

TAMPERE
FINLAND



All
Bright!

TAMPERE
FINLAND

Tampere Region - One of Finland's fastest developing and most attractive regions

People

490,000 inhabitants (in Tampere 220 000)

Education

the most important centre for research and education... some 40,000 students, two universities, three universities of applied sciences

Business

about 30,500 places of business... companies in the region include Nokia, Intel, Cargotec, Glaston, John Deere, Agco Sisu Power, Metso, UPM, Sandvik, Nokian Tyres, Santen, FIT Biotech

Leisure

Trade fairs, congresses, museums, events, theatre, sport, urban nature, positive flow



All
Bright!

TAMPERE
FINLAND

Tampere Aims at Transparency

Central administration regulation, August 2012

- *“Tampere obligates its units to open data”*

Tampere Mayor’s policy program 2013-2016

- *“City increases the use of visualizations, open data and e-services”*
- *“Increase citizens ability to participate and influence decision-making”*

Tampere city strategy 2025

- *“The information produced by the city is open.”*
- *“Opportunities for service users, service providers and other stakeholders to participate in service development and decision making have been improved.”*



All
Bright!

TAMPERE
FINLAND

Open Data Tampere Region

Open Data Tampere Region project was founded in the beginning of 2013 to speed up opening and utilizing public data.

- Encourages and helps to open the data.
- Activates utilizing the data.
- Brings opening the data as a part of normal city functions.
- Develops opportunities for businesses.

<http://data.tampere.fi>



THE CITY OF TAMPERE

 tietohallinto.

OPEN All
Bright!
TAMPERE


TREDEA



All
Bright!

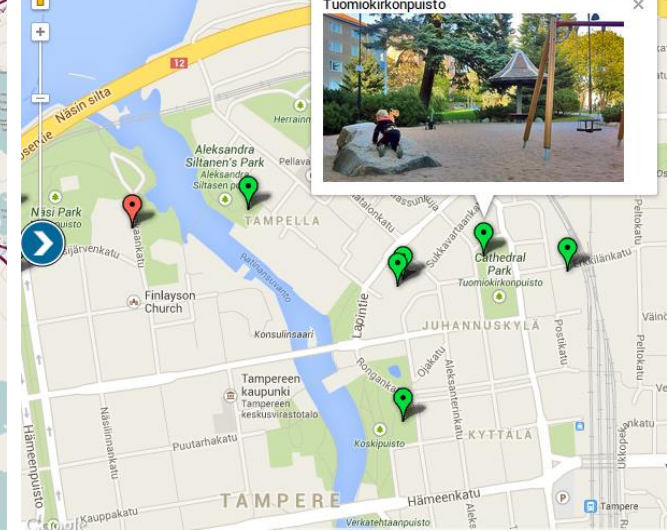
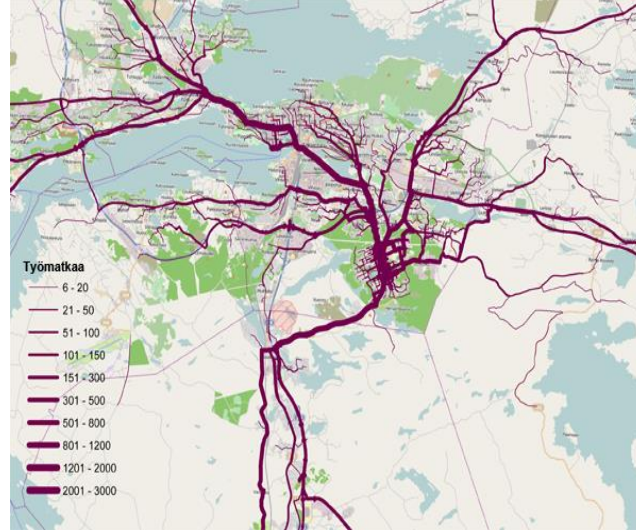
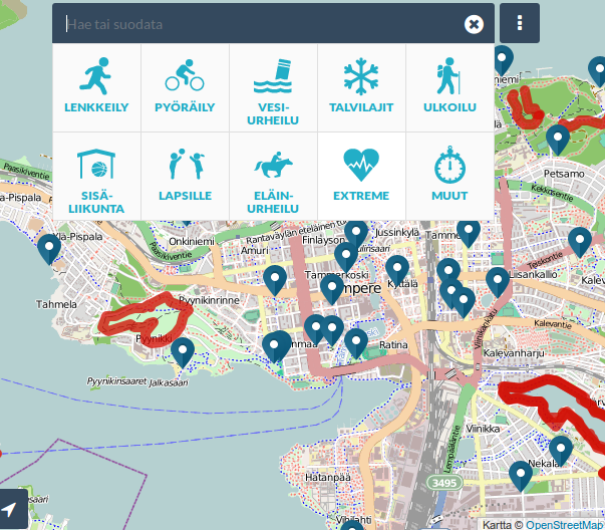
TAMPERE
FINLAND

Results 2013

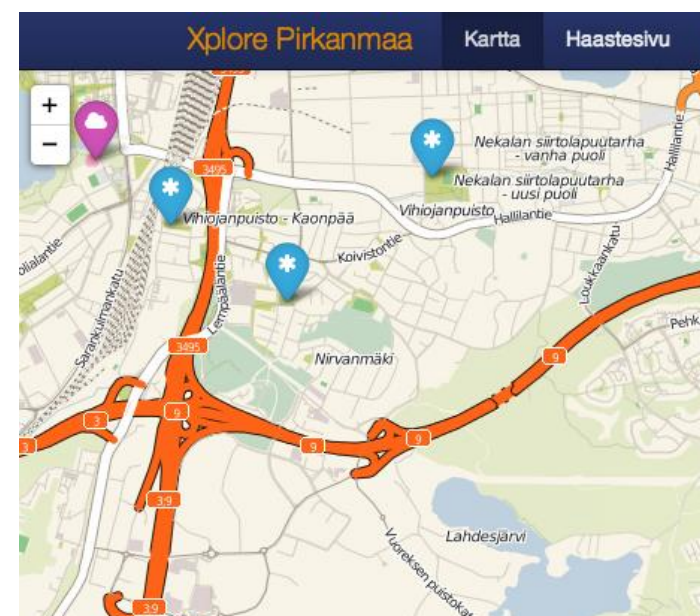
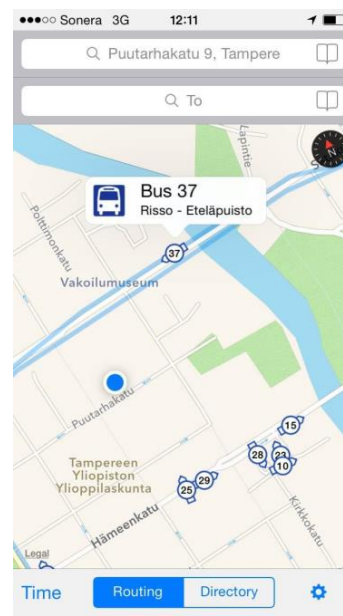
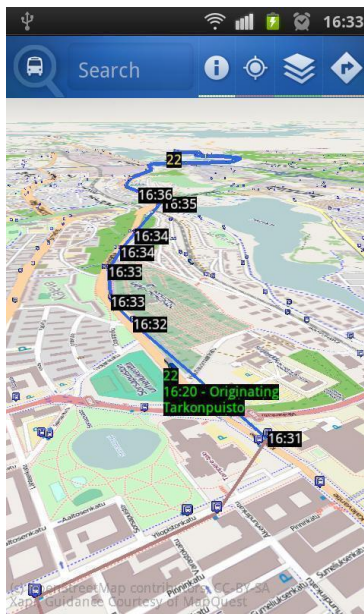
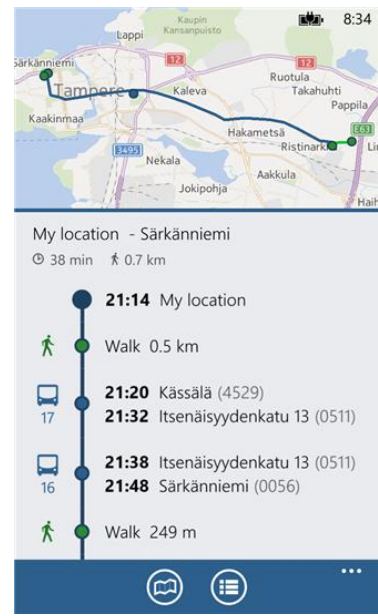
- Over 60 open datasets and interfaces
- Over 25 applications and services, which utilize published data
- Over 15 events with over 500 participants
- New service: Avoindata.net - community based open data support
- New competition: Apps4Pirkanmaa - innovations based on data

→ City of Tampere is now one of the top 3 open data cities in Finland.





Over 20 apps & services based on published data



All
Bright!

TAMPERE
FINLAND

Case: Public Transport Data

- Tampere Public Transport unit has been opening bus schedules and location data since 2012
- High quality bus location data using international standards (SIRI, GTFS)
- Applications have been developed on all major mobile platforms and are widely used

All
Bright!

TAMPERE
FINLAND

Official application

The screenshot shows the 'Traffic Monitor' page of the Tampere Public Transport e-services. At the top, there is a navigation bar with icons for home, timetables, journey planner, transit map, cycle route planner, and traffic monitor. Below this, a search bar is available for finding stops. A 'Real-time stop information' section includes a search input and a 'Search' button. A 'Traffic exceptions' section contains a red warning icon and text about bus line 25. The main part of the page is a map of Tampere with various bus routes and stops marked with numbered blue circles. A grid of route numbers is displayed above the map, with route 28 highlighted in black. A bus icon is shown at the bottom left of the map area.

Tampere Public Transport
e-services

Traffic Monitor

feedback

TIMETABLES JOURNEY PLANNER TRANSIT MAP CYCLE ROUTE PLANNER TRAFFIC MONITOR

Lissu > Home

Real-time stop information

Find stop My stops

Stop name or number:

Search

Traffic exceptions

Linjan 25 pysäkki on siirtynyt Keskustorilla Yliopiston apteekin vieriselle pysäkille B.
Validity: 6.6.2014 - 13.6.2014
Stops concerned: 0015, 0024, 0038, 4618, 0501, 0505

TAMPERE

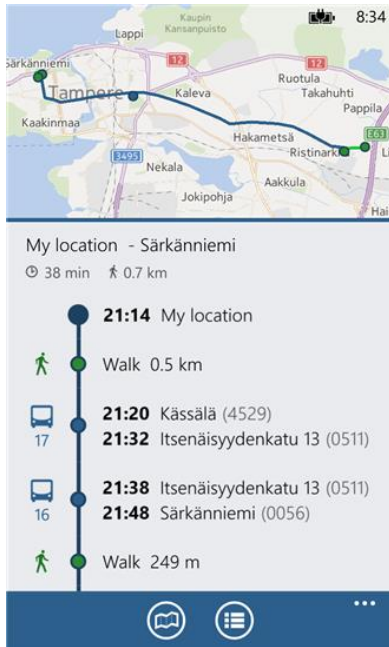
1 2 3 5 6 7 10 11 12 13 15 16 17 18 20 21 22 23 y23
24 25 26 27 28 y28 29 30 31 33 36 37 90 91 92A 92B

Traffic Monitor is a service that enables you to monitor Tampere bus traffic in real time and view predicted bus arrival times on stops.
[Instructions](#)

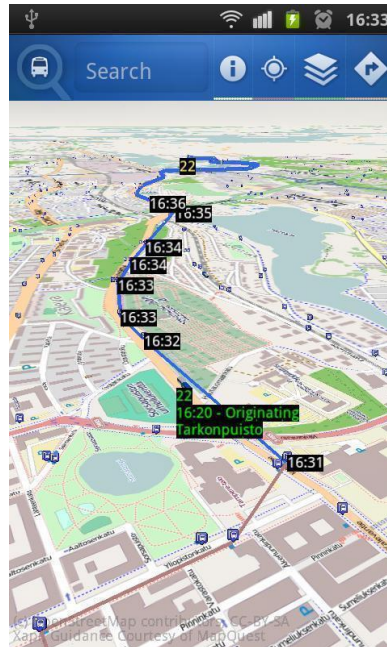
All Bright!

TAMPERE
FINLAND

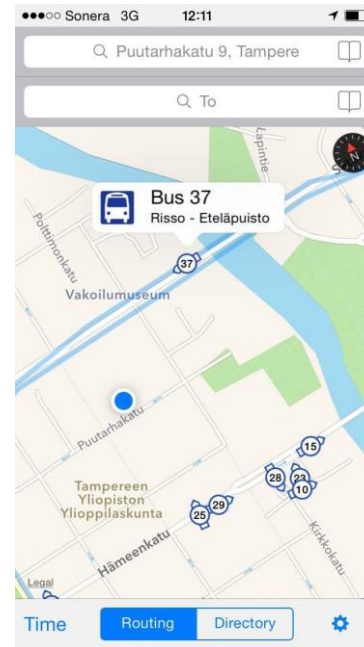
3rd party apps



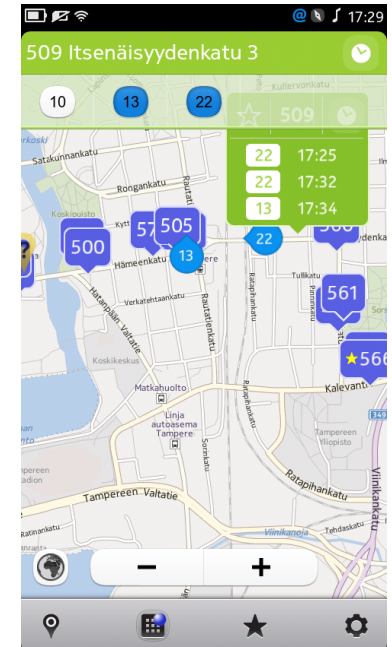
Windows Phone



ANDROID



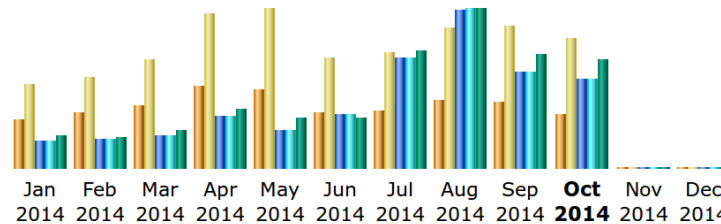
Available on the iPhone
App Store



MeeGo
for Android™ symbian

Sailfish

Statistics of public transport data 27.10.2014



Month	Unique visitors	Number of visits	Pages	Hits	Bandwidth
Jan 2014	21,618	37,207	1,505,646	1,506,562	60.63 GB
Feb 2014	24,392	39,945	1,597,978	1,598,745	58.42 GB
Mar 2014	27,611	47,654	1,879,148	1,880,573	72.71 GB
Apr 2014	36,094	68,295	2,892,392	2,893,473	112.36 GB
May 2014	34,885	70,155	2,140,825	2,147,605	95.71 GB
Jun 2014	24,826	48,946	3,009,752	3,013,224	94.62 GB
Jul 2014	25,343	50,679	6,210,831	6,212,760	220.97 GB
Aug 2014	30,025	61,595	8,918,308	8,922,401	297.51 GB
Sep 2014	29,022	62,489	5,421,507	5,424,685	214.08 GB
Oct 2014	23,996	57,002	5,006,640	5,010,225	203.93 GB
Nov 2014	0	0	0	0	0
Dec 2014	0	0	0	0	0
Total	277,812	543,967	38,583,027	38,610,253	1430.94 GB

Largest Cities' Sustainable Development Strategy

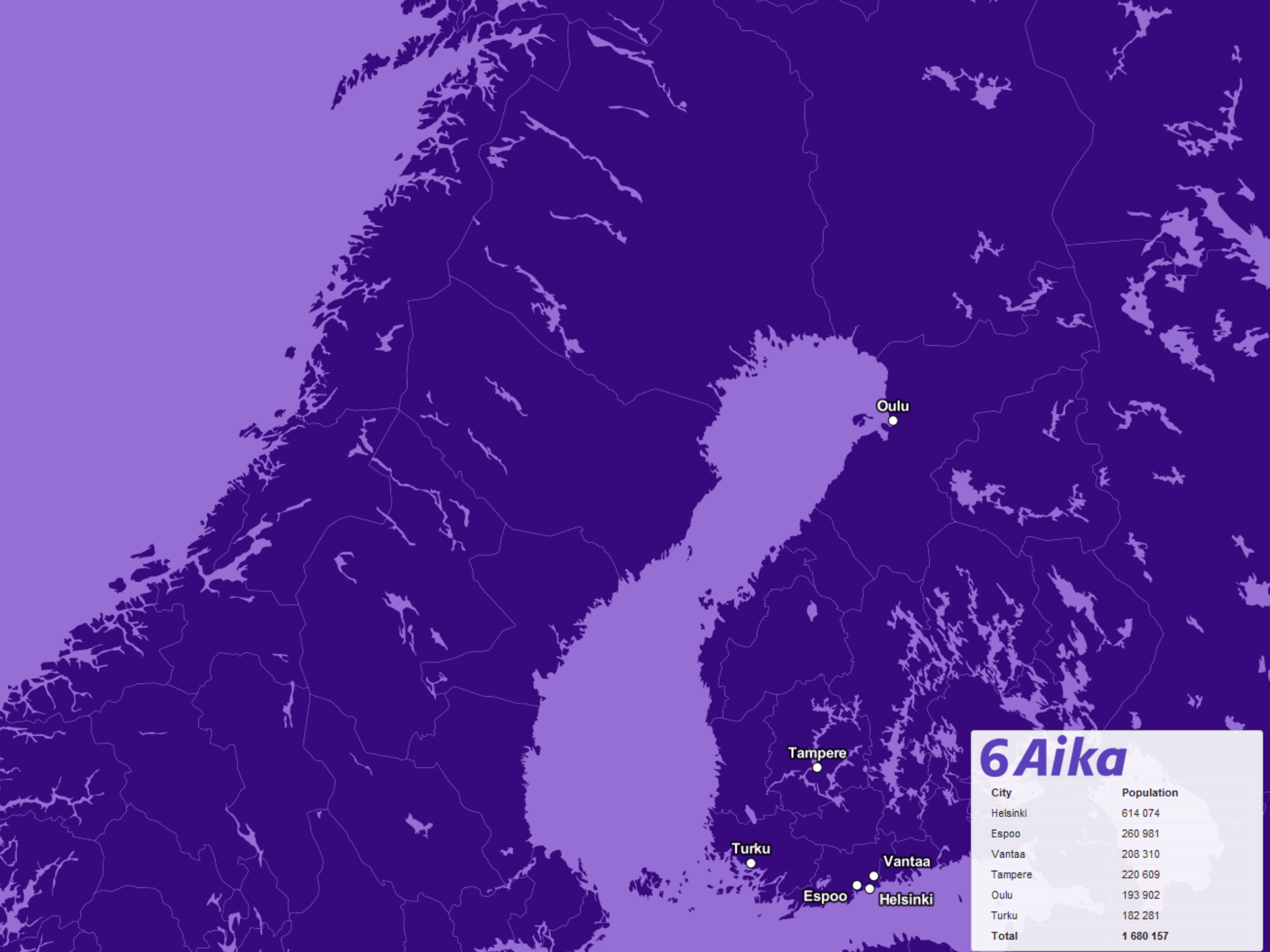
6 Aika

Sustainable Urban Development is one national EU Structural Fund program 2014–2020 emphasis.

- Carried out by Finland's six largest cities: Helsinki, Espoo, Vantaa, Tampere, Oulu and Turku
- Cities decide the contents of strategy implementation as well as specific projects to be financed.
- Budget about 100 M€ for 2014-2020.



Leverage from
the EU
2014–2020



6 Aika

City	Population
Helsinki	614 074
Espoo	260 981
Vantaa	208 310
Tampere	220 609
Oulu	193 902
Turku	182 281
Total	1 680 157

6Aika: Three Focus Areas

6Aika

Open Innovation Platforms

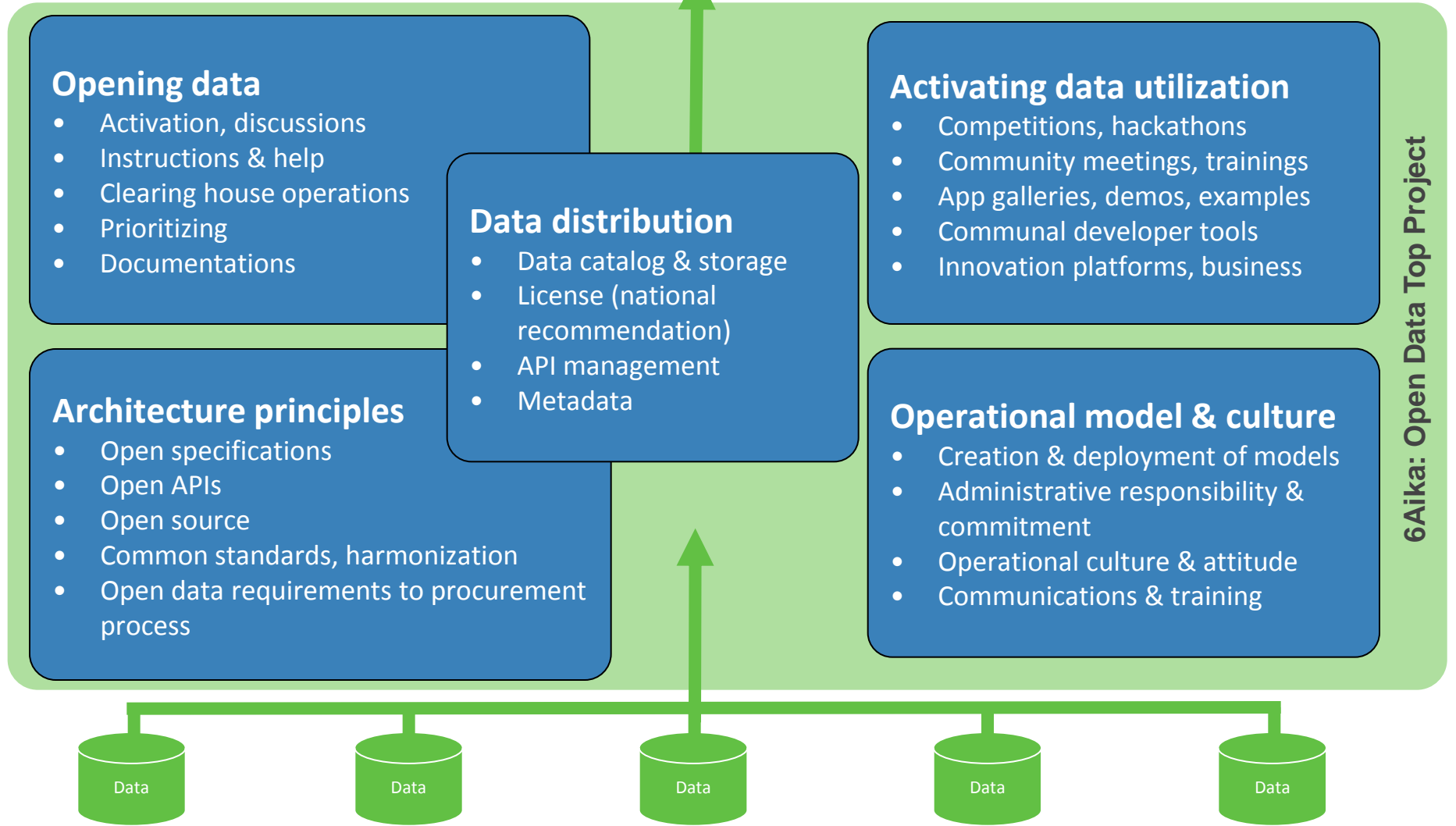
- Common platforms for cities, citizens and companies to develop and test new know-how as well as services and other products.

Open participation

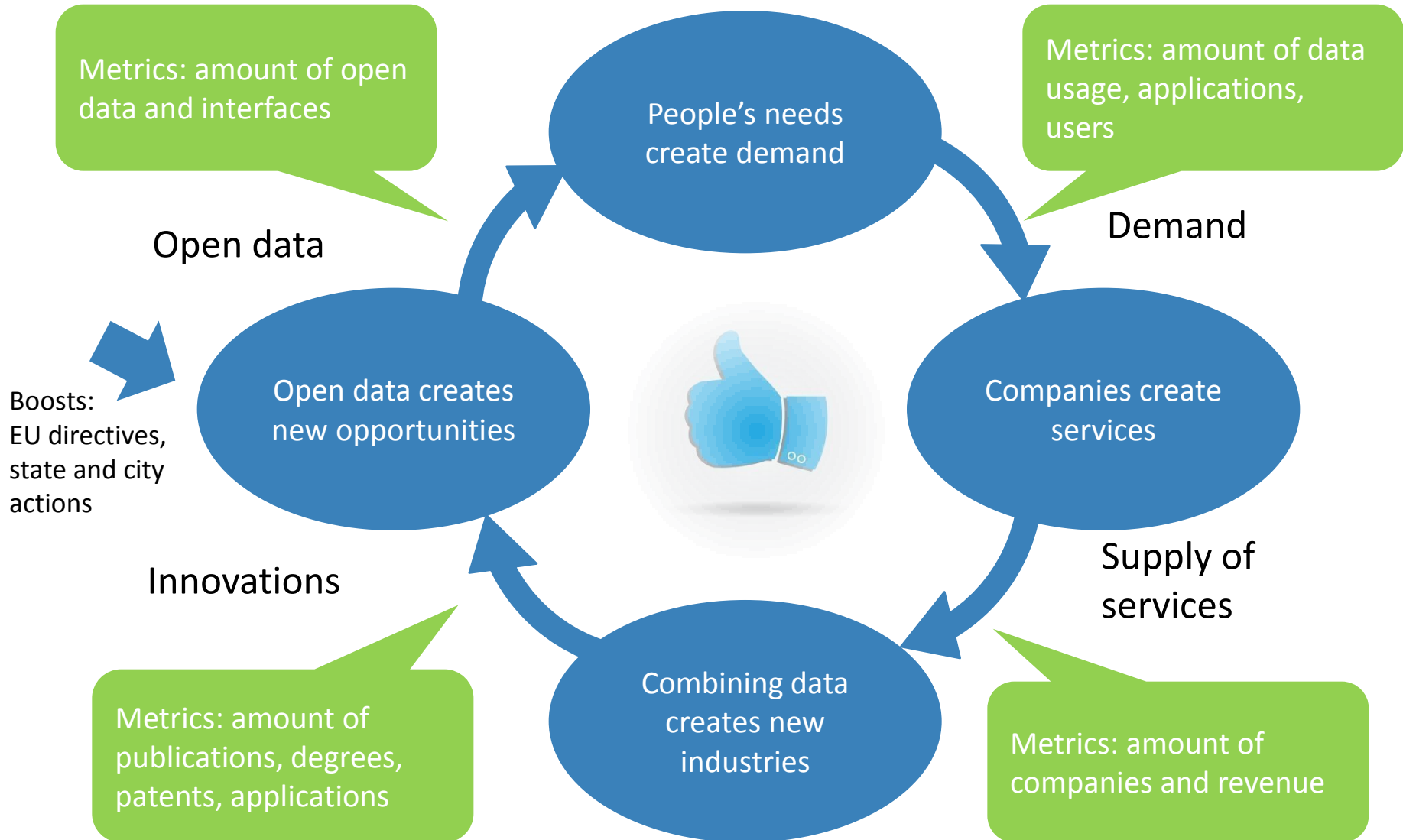
- Citizens involved with the development of decision making as well as public services and other activities.
- Open and smooth multichannel customer services systems for all citizens' groups.

Open data and interfaces

- Cities open their public data bases for public and private users and harmonize their data interfaces.



Virtuous circle of open data





6 Aika

